



# TNC ENTERPRISE SOLUTION

Touchstar Nerve Centre



*Fingerprint • RFID • Smart Card Solutions*

[www.autostar.com.sg](http://www.autostar.com.sg)



## Powerful. Flexible. Speed.

Touchstar Nerve Center (TNC) from Autostar Technology offers unprecedented fingerprint identification solution for both Access Control and Time and Attendance applications.

For Access Control applications, our TNC can control up to two access control points. For entry-only control, each of these access control points can be hooked up with any of our Enterprise clients. For both entry and exit control, a pair of Enterprise client and a contactless card reader with Wiegand interface can be used at each access control point. In a very high security application, our TNC can provide a single access control point with any of our Enterprise clients as the entry and exit readers.

For Time and Attendance applications, you can hook up to three Enterprise clients so that more people can be processed at any point of time. This effectively improves the throughput of the clocking system. In addition, since only one TNC is required for three Enterprise clients, the total system costs would be reduced.

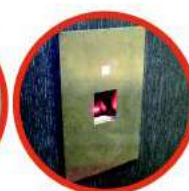
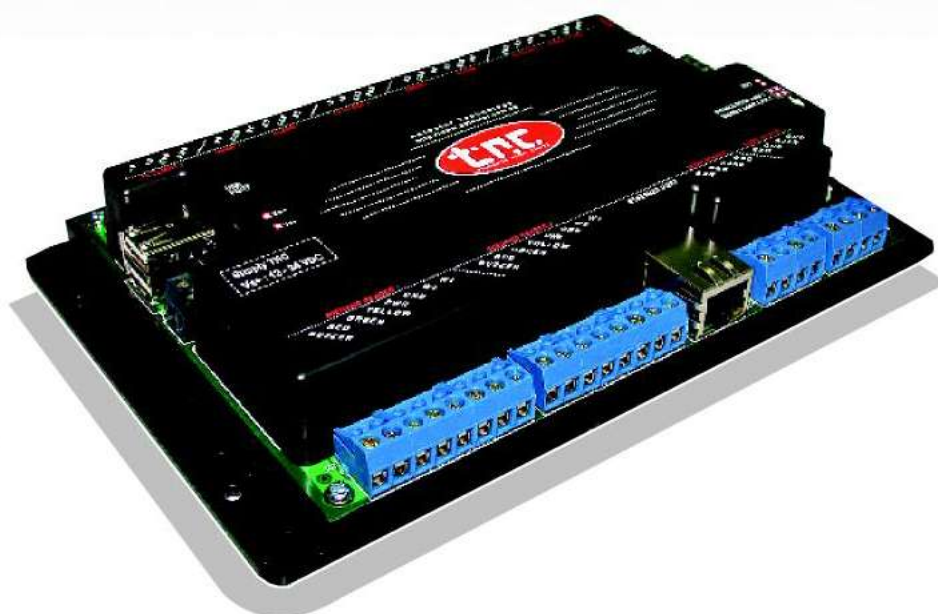
At the heart of our TNC is a powerful processor that provides very high matching speed with highly reliable positive identification. With a built-in ethernet interface, fingerprint template management would be more efficient and faster. Fingerprint template capacity can be increased by adding a SD memory card into our TNC to meet the most stringent demands. All our Enterprise clients provide a Wiegand output interface to cater for integration with any of the popular third party controllers in the market.

### FEATURES

- Support up to 3 Enterprise clients
- Flexible
- Easy to set up
- Build-in ethernet connectivity
- Supports Wiegand interface
- Supports up to 6 fingerprints per ID
- Stores 100,000 event logs
- Supports time zone for access control
- 1: N matching available
- Configurable ID length (3-10)
- Supports multiple factor authentication with any of these factors i.e. ID, PIN, Card and fingerprint.

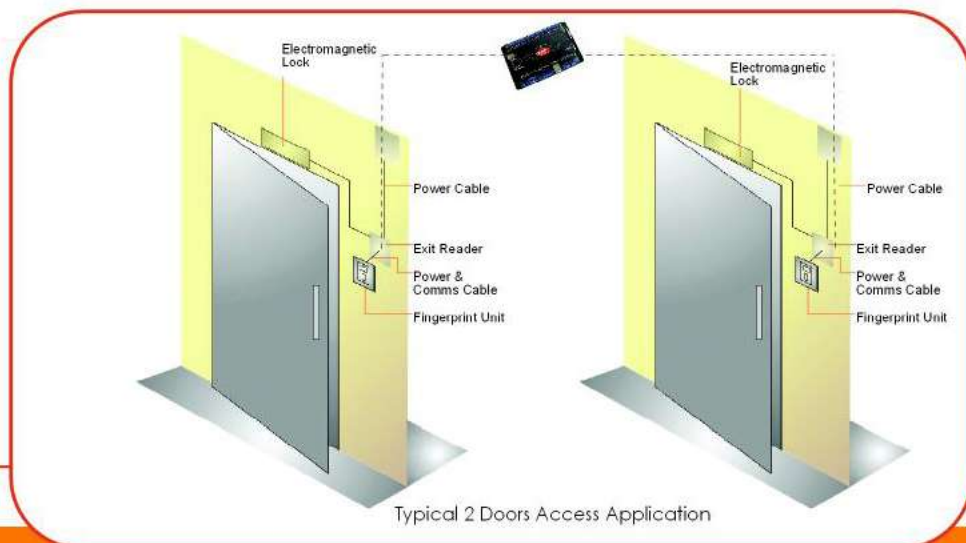
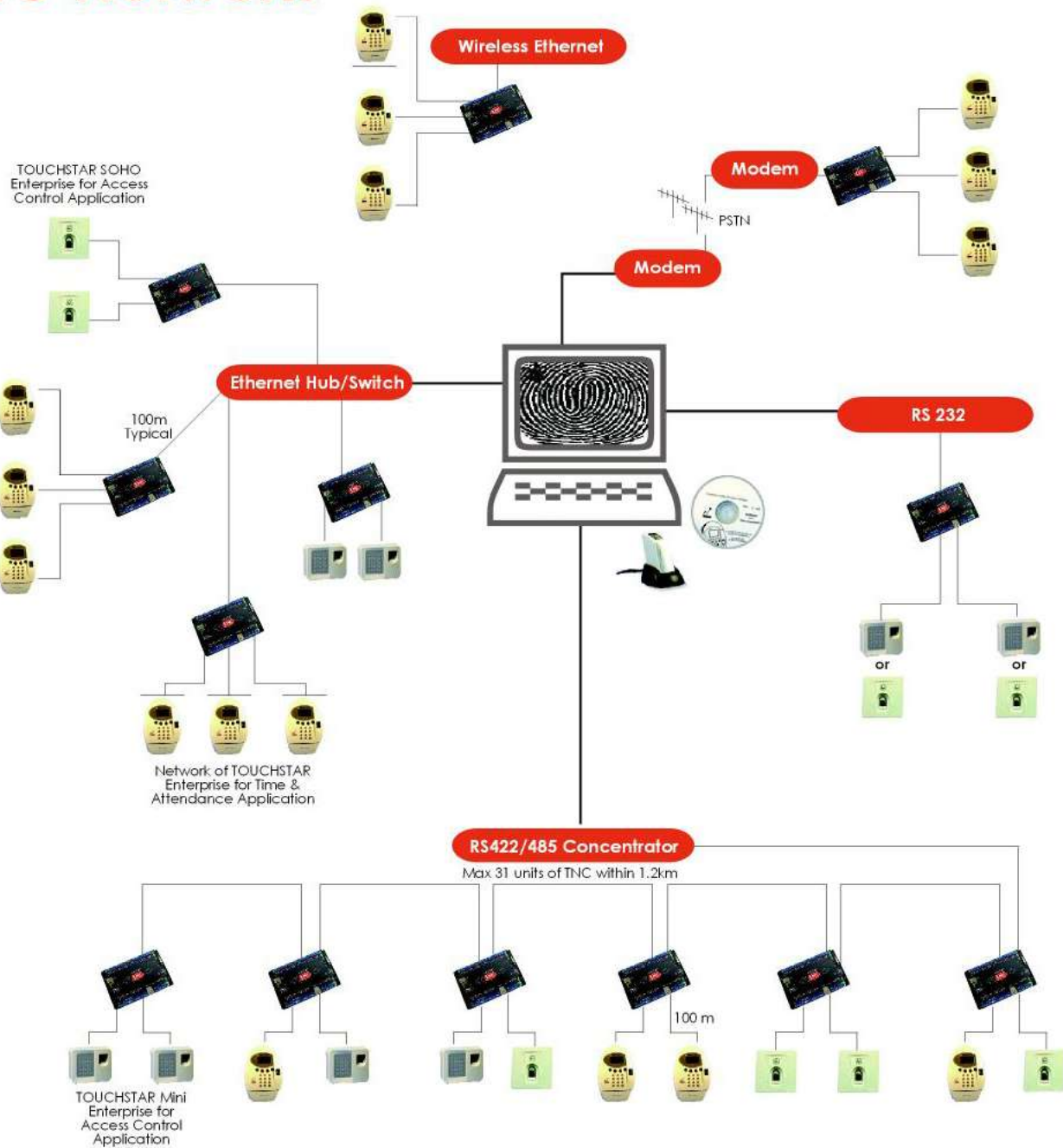
### APPLICATIONS

- Time and Attendance and control access to computer server room, safe deposit room, remote power station, research and development laboratory.
- Personnel verification
- Prevent unauthorised access control
- Prevent "buddy punching" or "ghost employee"






# TNC Network



# TNC Specifications



Supply Voltage	12 to 24 VDC
Power Consumption	2A @ 12VDC when operating 3 Enterprise clients
Dimension	200 x 127 x 33 mm
Weight	0.4 kg
Fingerprint Storage	5000 Templates
Event Log	100000
Comm Interface	1 RS232/RS485/RS422, 1 TCP/IP, Modem (external)
Clock/Calendar	Battery backup
USB Port	2 (For optional WiFi USB dongle)
SD Card Interface	1 (for template expansion)
Fingerprint Unit Interface	Up to 3 Enterprise clients can be connected
Door Control Relay	2 (for two doors control)
Alarm Relay	2 (for two doors control)
Door Sensing Signal	2 Door Ajar, 2 Door Exit (for two doors control)
Evacuation Signal	1
Wiegand Input Port	2 (Include three Led outputs signal ,one Buzzer output signal , and power supply output on each port)
Fingerprint Minutia Size	max 798 bytes
Identification Speed	1 second (1:N with 1000 template)
Verification Speed	< 1 second
False Acceptance Rate	0.0001 %
False Rejection Rate	< 1 %

Enterprise Client	 TOUCHSTAR Enterprise	 TOUCHSTAR Mini Enterprise	 TOUCHSTAR SOHO Enterprise
Power Supply	By TNC	By TNC	By TNC
Operating Environment	Ambient 0-60°C Humidity 10-90% RH	Ambient 0-60°C Humidity 10-90% RH	0 - 70°C
Dimension (WxHxD) mm	158 x 240 x 73	138 x 110 x 44	86 x 86 x 35
Weight	<1Kg	<0.5Kg	<250g
Fingerprint Sensor	Optical 500dpi Area 13.1m x 15.1m	Optical 500dpi Area 13.1m x 15.1m	Silicon 1 million wear cycle
Rotation Tolerance	+/- 90 degrees	+/- 90 degrees	+/- 90 degrees
LCD	128x64 Graphic with LED Backlight	None	None
LED	2	3	3
Keypad	16 Keys [with 4 Functions Keys]	15 Keys [with 3 Functions Keys]	Door Bell
Material	- Keypad : Silicon Rubber - Enclosure : High Impact PC-ABS	- Keypad : Membrane - Enclosure : High Impact PC-ABS	- Keypad : Membrane - Enclosure : High Impact PC-ABS
Contactless Card Reader	HID/Mifare/Felica/EM/LEGIC/iCLASS	HID/Mifare/Felica/EM/LEGIC/iCLASS	HID/Mifare/Felica/EM/LEGIC/iCLASS
Optional	- Smart Card Interface - Barcode Reader [external] - Magnetic Stripe Reader [external] - Stainless Steel Flush Mount		





# Our Software

## Features

### TOUCHSTAR Device Manager

- Multi-level user access
- Flexible communication options
- Centralized fingerprint enrollment
- Centralized device management
- Time zone access control management
- Flexible event log collection
- Import & export user database and event log
- Basic Time & Attendance Reports generator

## TDM Express

### Managing of devices

- Configuration of devices' communication mode
- Configuration of devices' properties

### Managing of users

- Central fingerprint enrollment and access rights assignment
- Allows import and export of user information
- Allows easy user records synchronization between devices and software
- Allows mirroring of user records between devices and software

### Managing of log records

- Allows uploading from devices
- Allows exporting to text
- Allows generation of time attendance reports
- Standalone module supporting continuous or scheduled uploading

### Managing of administrators

- Allows different software module access privilege

### Auxiliary features

- Backup and restore functionality

## TDM Express Professional

Has similar features as TDM Express with the following additions:

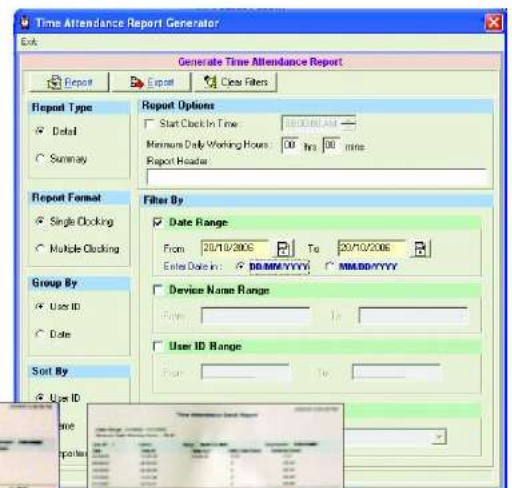
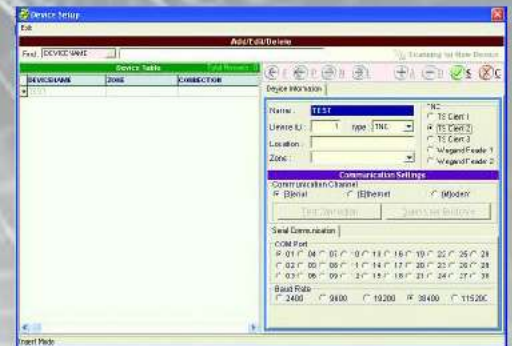
### Managing of access timezone

- Allows users' accessibility to be controlled by schedules
- Maximum 20 schedules; each schedule has 8 definable periods of accessibility
- Allows creation of 2 calendar years with definable public holidays

## Reports

### Reports available in TDM Express

- Time attendance detail report (single/multiple clocking)
- Time attendance summary report
- Time attendance log report
- Event trace log report
- Failed attempts log report
- User without fingerprint enrollment report
- User access rights report
- User without access rights report



# Product Series

## Model Number

**TNC5000** TOUCHSTAR Nerve Centre with 5000 fingerprint templates



## Model Number : Our E-Series

**E51-H** TOUCHSTAR Enterprise with HID reader  
**E51-M** TOUCHSTAR Enterprise with Mifare/ Felica reader  
**E51-E** TOUCHSTAR Enterprise with EM reader

**E52-H** TOUCHSTAR Mini Enterprise with HID reader  
**E52-M** TOUCHSTAR Mini Enterprise with Mifare/ Felica reader  
**E52-E** TOUCHSTAR Mini Enterprise with EM reader

**E53-H** TOUCHSTAR SOHO Enterprise with HID reader  
**E53-M** TOUCHSTAR SOHO Enterprise with Mifare/ Felica reader



## Software Product

**ES 5900-00** TDM Express (bundled with desktop fingerprint scanner)  
**ES 5900-PO** TDM Express Professional (bundled with desktop fingerprint scanner)  
**ES 5900-AO** Enterprise Development Kit  
**ES 5900-AD** Xpansion Pack

## System Requirement

**Computer** P3 or Higher with x2 USB Port  
**Harddisk space** Min 100Mb  
**Drive** CD Rom for installation  
**Display** SVGA 800 x 600 min  
**OS** Vista / Win XP/ 2000



## AUTOSTAR TECHNOLOGY PTE LTD

5012 Ang Mo Kio Ave 5 Unit 04-10 TECH Place II Singapore 569876

Tel: (65) 6482 9595 Fax: (65) 6482 1833

Website: [www.autostar.com.sg](http://www.autostar.com.sg) Email: [sales@autostar.com.sg](mailto:sales@autostar.com.sg)

iCLASS and LEGIC are the trademarks of HID Corporation and LEGIC Identisystems respectively. The information contained in this document reflects the current state of design and we reserve the right to change the specification without notice or obligation.